
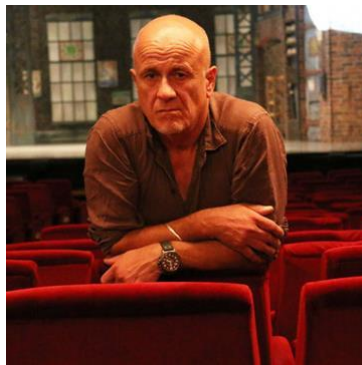


Having trouble viewing this email? You can [view it online](#).

 Like |  @LivePerfAust |  Follow |  Forward



VALE



Mark Rowe (1960 - 2018)

LPA was very saddened to hear of the sudden passing of theatre manager Mark Rowe on Sunday 28 October.

Mark was General Manager of Her Majesty's Theatre, affectionately known as 'The Maj', for nine years.

Mark began his career as a Stage Manager at Sydney Theatre Company. He then worked as a Freelance Company Manager for various commercial production houses for nearly 30 years. Mark worked on many major musicals during a long and successful career.

Educated at the University of Adelaide Mark completed a Bachelor of Arts, Economics, History and Music.

Highly respected by the entertainment industry and theatre world Mark loved our industry and was a strong supporter and friend to many. He will be greatly missed.

Our thoughts and sincerest condolences are with Mark's partner, family, friends and colleagues.



[Live Performance Australia](#)

Level 1, 15-17 Queen Street
Melbourne, VIC 3000
Australia

[Edit your subscription](#) | [Unsubscribe](#)

Ph: +61 3 8614 2000

Live Performance Australia (LPA) and the Live Performance Australia logo are trademarks of the Australian Entertainment Industry Association.

ABN 43 095 907 857

The information in this email is confidential and may be legally privileged. The views and opinions expressed in this email are the author's and do not necessarily reflect those of LPA as an organisation. If you are not the intended recipient of this email, please delete the original message and notify the sender immediately by return email, or telephone on +61 (0)3 8614 2000. Any disclosure, copying, distribution or action taken or omitted in reliance on it may be unlawful.

Powered by  **Bridgeway Mailer**