



Australian Government

Australia's COVID-19
Vaccine Roadmap

Initial towns, suburbs, hubs and groups for COVID-19 vaccine Phase 1A

BE COVIDSAFE

COVID-19
VACCINATION

Safe. Effective. Free.

COVID-19 vaccine national roll-out strategy

Phase 1a – up to 1.4m doses

Commencing 22 February 2021

| | |
|--|----------------|
| Quarantine and border workers | 70,000 |
| Frontline health care worker sub-groups for prioritisation | 100,000 |
| Aged care and disability care staff | 318,000 |
| Aged care and disability care residents | 190,000 |
| Total | 678,000 |

Phase 1b – up to 14.8m doses

| | |
|--|------------------|
| Elderly adults aged 80 years and over | 1,045,000 |
| Elderly adults aged 70-79 years | 1,858,000 |
| Other health care workers | 953,000 |
| Aboriginal and Torres Strait Islander people > 55 | 87,000 |
| Younger adults with an underlying medical condition, including those with a disability | 2,000,000 |
| Critical and high risk workers including defence, police, fire, emergency services and meat processing | 196,000 |
| Total | 6,139,000 |

Phase 2a – up to 15.8m doses

| | |
|---|------------------|
| Adults aged 60-69 years | 2,650,000 |
| Adults aged 50-59 years | 3,080,000 |
| Aboriginal and Torres Strait Islander people 18- 54 | 387,000 |
| Other critical and high risk workers | 453,000 |
| Total | 6,570,000 |

Phase 2b – up to 16m doses

| | |
|---|------------------|
| Balance of adult population | 6,643,000 |
| <i>Catch up any unvaccinated Australians from previous phases</i> | |

Phase 3 – up to 13.6m doses

| | |
|----------------------|-----------|
| < 18 if recommended* | 5,670,000 |
|----------------------|-----------|

Population numbers are current estimates for each category.
* 16 and 17 year olds will be able to access the Pfizer vaccine in line with the relevant cohort.

Aged Care – Week 1

Over 240 facilities in over 190 locations

| State/Territory | Location | State/Territory | Location | State/Territory | Location |
|-----------------|---------------|-----------------|-------------|-----------------|-----------------|
| NT | ALICE SPRINGS | ACT | CURTIN | TAS | BURNIE |
| NT | BRAITLING | ACT | FARRER | TAS | LEGANA |
| NT | COCONUT GROVE | ACT | GARRAN | TAS | NEWNHAM |
| NT | FANNIE BAY | ACT | GRIFFITH | TAS | NEWSTEAD |
| NT | FARRAR | ACT | HUGHES | TAS | NORWOOD |
| NT | NIGHTCLIFF | ACT | NARRABUNDAH | TAS | PENGUIN |
| NT | TIWI | ACT | RED HILL | TAS | RIVERSIDE |
| | | ACT | STIRLING | TAS | SOMERSET |
| | | ACT | WESTON | TAS | ST LEONARDS |
| | | | | TAS | ULVERSTONE |
| | | | | TAS | WEST ULVERSTONE |
| | | | | TAS | WYNYARD |

Aged Care – Week 1

| State/Territory | Location | State/Territory | Location | State/Territory | Location |
|-----------------|----------------------|-----------------|--------------|-----------------|----------------|
| NSW | ALSTONVILLE | NSW | GOSFORD WEST | NSW | PORT MACQUARIE |
| NSW | AUSTRAL | NSW | HEATHCOTE | NSW | PRESTONS |
| NSW | BALLINA | NSW | ILLAWONG | NSW | ROSELANDS |
| NSW | BANGOR | NSW | JAMISONTOWN | NSW | SPRINGWOOD |
| NSW | BARDEN RIDGE | NSW | MARAYONG | NSW | STANWELL PARK |
| NSW | BLACKTOWN | NSW | MINTO | NSW | TARRAWANNA |
| NSW | COLLARROY | NSW | MORTDALE | NSW | TERREY HILLS |
| NSW | COLLARROY PLATEAU | NSW | MOUNT AUSTIN | NSW | THIRROUL |
| NSW | CORRIMAL | NSW | NARRABEEN | NSW | UMINA BEACH |
| NSW | CRONULLA | NSW | ORANGE | NSW | WAGGA WAGGA |
| NSW | DEAN PARK | NSW | PEAKHURST | NSW | WARRIEWOOD |
| NSW | EMU PLAINS | NSW | PENRITH | NSW | WOONONA |
| NSW | ENGADINE | NSW | PENSHURST | NSW | WOY WOY |
| NSW | GLENFIELD | NSW | POINT CLARE | | |

Aged Care – Week 1

| State/Territory | Location | State/Territory | Location | State/Territory | Location |
|-----------------|-----------------|-----------------|-----------------|-----------------|-----------------|
| QLD | ALBANY CREEK | QLD | HARRISTOWN | QLD | PIMPAMA |
| QLD | ASPLEY | QLD | HOPE ISLAND | QLD | REDLAND BAY |
| QLD | BALD HILLS | QLD | KEARNEYS SPRING | QLD | ROBINA |
| QLD | BEACONSFIELD | QLD | KEPNOCK | QLD | SIPPY DOWNS |
| QLD | BIRTINYA | QLD | LAWNTON | QLD | SOUTH TOOWOOMBA |
| QLD | BRAY PARK | QLD | MACKAY | QLD | THORNLANDS |
| QLD | BUDERIM | QLD | MERIDAN PLAINS | QLD | TOOWOOMBA |
| QLD | BUNDABERG | QLD | MILLBANK | QLD | UPPER COOMERA |
| QLD | BURLEIGH HEADS | QLD | MIRANI | QLD | VARSITY LAKES |
| QLD | BURLEIGH WATERS | QLD | MUDGEERABA | QLD | VICTORIA POINT |
| QLD | CARSELDINE | QLD | NORTH BUNDABERG | QLD | WARANA |
| QLD | CLEVELAND | QLD | NORTH MACKAY | QLD | WEST MACKAY |
| QLD | GLENELLA | QLD | NORTH TAMBORINE | QLD | WOOMBYE |
| QLD | GLENVALE | QLD | PALMWOODS | | |

Aged Care – Week 1

| State/Territory | Location | State/Territory | Location | State/Territory | Location |
|-----------------|------------------|-----------------|------------------|-----------------|----------------|
| VIC | ALTONA MEADOWS | VIC | DROUIN | VIC | NUNAWADING |
| VIC | BALLARAT | VIC | DRYSDALE | VIC | OCEAN GROVE |
| VIC | BALLARAT EAST | VIC | EAST BENDIGO | VIC | POINT COOK |
| VIC | BAYSWATER | VIC | FOREST HILL | VIC | POINT LONSDALE |
| VIC | BENDIGO | VIC | HEATHMONT | VIC | PORTARLINGTON |
| VIC | BLACKBURN | VIC | HOPPERS CROSSING | VIC | RINGWOOD |
| VIC | CALIFORNIA GULLY | VIC | IRONBARK | VIC | VERMONT |
| VIC | CANADIAN | VIC | JUNCTION VILLAGE | VIC | VERMONT SOUTH |
| VIC | COWES | VIC | LARA | VIC | WALLINGTON |
| VIC | CRANBOURNE | VIC | LONG GULLY | VIC | WANTIRNA |
| VIC | CRANBOURNE EAST | VIC | MOE | VIC | WANTIRNA SOUTH |
| VIC | CRESWICK | VIC | MORWELL | VIC | WARRAGUL |
| VIC | DANDENONG | VIC | MOUNT CLEAR | VIC | WENDOUREE |
| VIC | DANDENONG NORTH | VIC | NEERIM SOUTH | VIC | WERRIBEE |
| VIC | DELACOMBE | VIC | NEWBOROUGH | | |

Aged Care – Week 1

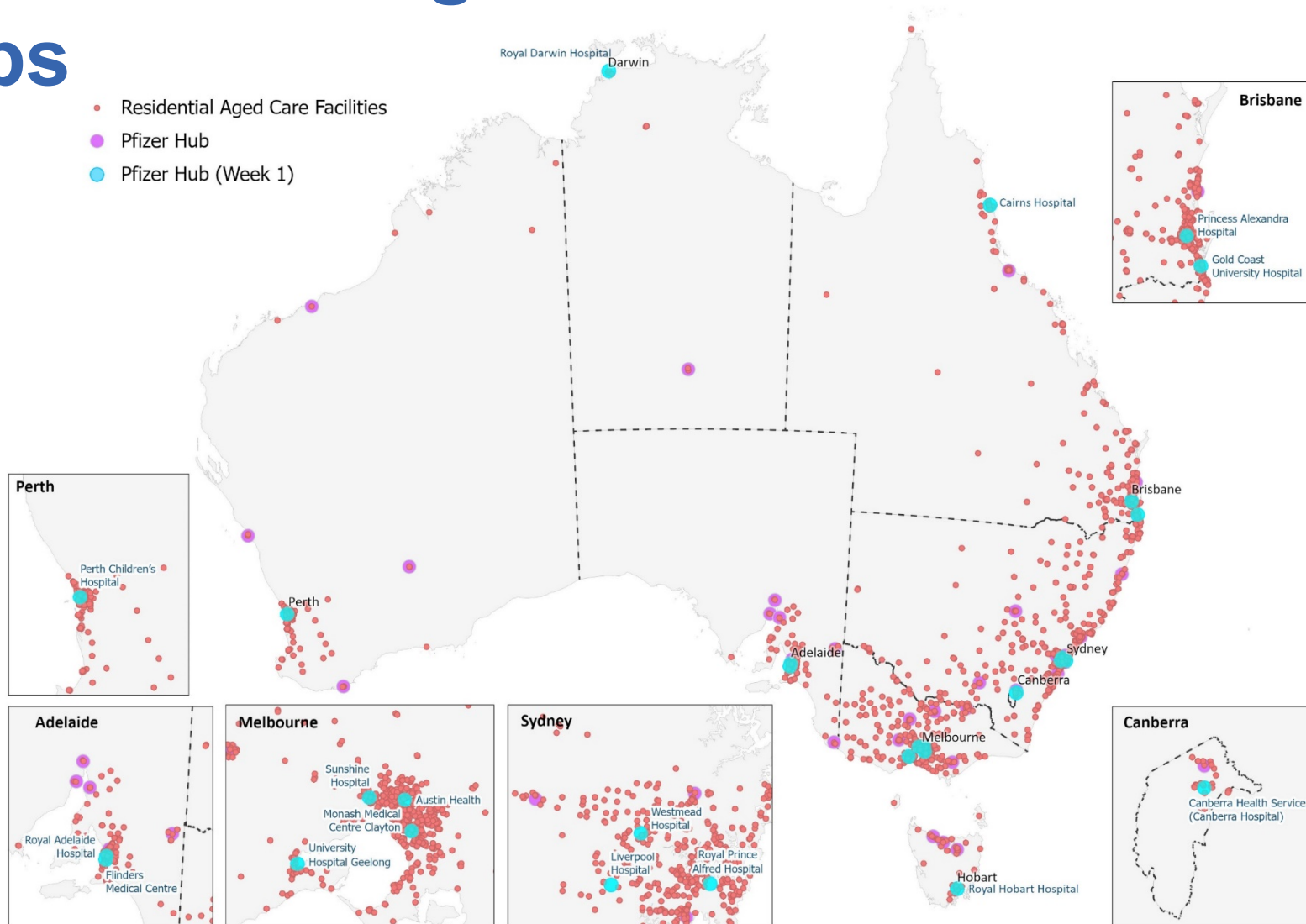
| State/ Territory | Location | State/ Territory | Location | State/ Territory | Location |
|------------------|----------------|------------------|---------------|------------------|---------------|
| SA | ALDGATE | SA | PORT ELLIOT | WA | KINGSLEY |
| SA | COWANDILLA | SA | URAILDA | WA | LOCKYER |
| SA | ENCOUNTER BAY | SA | VICTOR HARBOR | WA | MADELEY |
| SA | EVERARD PARK | WA | BALCATT | WA | MARANGAROO |
| SA | GOOLWA | WA | BUNBURY | WA | MIRRABOOKA |
| SA | HAHNDORF | WA | CALISTA | WA | PORT KENNEDY |
| SA | HEATHFIELD | WA | CAREY PARK | WA | ROCKINGHAM |
| SA | LOCKLEYS | WA | COOLOONGUP | WA | SHOALWATER |
| SA | MARION | WA | DONNYBROOK | WA | SOUTH BUNBURY |
| SA | MARLESTON | WA | EATON | WA | SPENCER PARK |
| SA | MORPHETTVILLE | WA | EMU POINT | WA | WAIKIKI |
| SA | MOUNT BARKER | | | WA | YAKAMIA |
| SA | NORTH PLYMPTON | | | | |
| SA | OAKLANDS PARK | | | | |

Initial vaccination hubs - Week 1

| State/Territory | Location |
|-----------------|--------------------------------|
| NSW | ROYAL PRINCE ALFRED HOSPITAL |
| NSW | WESTMEAD HOSPITAL |
| NSW | LIVERPOOL HOSPITAL |
| VIC | MONASH MEDICAL CENTRE CLAYTON |
| VIC | SUNSHINE HOSPITAL |
| VIC | AUSTIN HEALTH |
| VIC | UNIVERSITY HOSPITAL GEELONG |
| QLD | GOLD COAST UNIVERSITY HOSPITAL |
| QLD | CAIRNS HOSPITAL |
| QLD | PRINCESS ALEXANDRA HOSPITAL |
| SA | ROYAL ADELAIDE HOSPITAL |
| SA | FLINDERS MEDICAL CENTRE |
| WA | PERTH CHILDREN'S HOSPITAL |
| TAS | ROYAL HOBART HOSPITAL |
| ACT | THE CANBERRA HOSPITAL |
| NT | ROYAL DARWIN HOSPITAL |

Vaccination sites – Aged Care and Pfizer Hubs

- Residential Aged Care Facilities
- Pfizer Hub
- Pfizer Hub (Week 1)



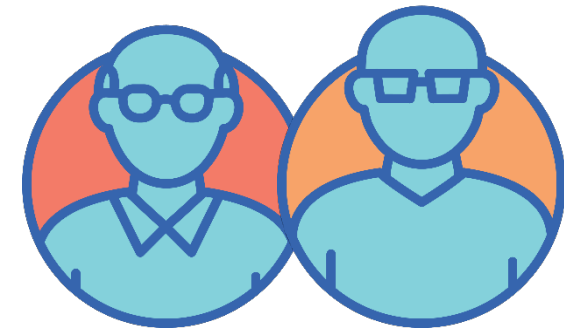
Who will be the first to be vaccinated under Phase 1a as recommended by the Australian Technical Advisory Group on Immunisation



Frontline healthcare workers



Border and quarantine workers



People living and working in residential aged care and disability care settings



Phase 1a: Frontline Healthcare Workers

Who

- Clinical staff, medical students and administrative staff in facilities and services such as hospital emergency departments, COVID-19 and respiratory wards, Intensive Care Units and High-dependency Units
- Laboratory staff handling potentially infectious material
- Ambulance and paramedics services
- GP respiratory clinics workers
- COVID-19 testing facility workers

Where

Vaccination
Hubs

Requirements

Proof of occupation will
be required to
demonstrate eligibility



Phase 1a: Quarantine and Border Workers

Who

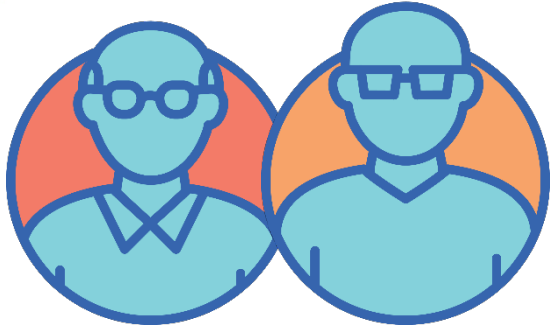
- Staff at entry points to the country (such as sea ports and land borders)
- Staff working in quarantine facilities, including those employed under Commonwealth, state or private agreements
- Commonwealth employees (including Defence personnel) who are identified as having the potential to encounter returning travellers as part of their work

Where

Vaccination
Hubs

Requirements

Proof of occupation will
be required to
demonstrate eligibility



Phase 1a: Residential Aged Care and Disability Care Facilities

Who

- Aged care and residential disability care workers
- People with a disability living in residential accommodation
- Residents of aged care facilities

Where

Via in-reach at
Residential
Aged Care and
Disability Care
Facilities

Requirements

Eligibility will be
confirmed by each
Facility

How can I find out more about being vaccinated during Phase 1a?



Border, quarantine and frontline health care workers:

- Your state or territory health department will notify you.

People living and working in residential aged care and disability care settings:

- Your residential aged care facility or disability service provider will provide you with further information about when and where you can be vaccinated.
- You can be vaccinated either at your facility or at a vaccination hub

How can I prove I've been vaccinated?

Australians can already access their immunisation history statement through Medicare for proof of vaccination, both digitally and in hard copy, if required.

Statements can be viewed on an individual's Medicare online account or via the Medicare app.

Your immunisation history statement will record your COVID-19 vaccinations, following each dose.



For more information on TGA's COVID-19 vaccine approval process visit: www.tga.gov.au/covid-19-vaccine-approval-process

For the latest COVID-19 vaccine updates visit: www.health.gov.au/covid19-vaccines

For the latest official coronavirus news, updates and advice from the Australian Government visit: www.australia.gov.au